



SP-RCT Ceiling Tile Enclosure System

Application:

Designed to prevent theft and tampering of radio equipment and easy install in environments where it is critical to protect the radio and be aesthetically pleasing or become low profile. The SP-RCT enclosure helps protect the radio while simplifying the installation and maintenance of your WLAN equipment. The Access Point LEDs can be easily viewed to determine RF link status and diagnostic needs without needing additional tools. The door also allows for ventilation so that the radio will not overheat. The RCT is a “drop-in” replacement for any suspended ceiling tile system. Ships complete with diversity jumper cables, internal mounting kit, plenum cable fittings and complete mounting hardware kit

Construction:

- Powder coated steel with steel hinge door and zinc plated latch.

Finish/Color:

Powder Coated White

Features:

- Steel enclosure with hinged door.
- Powder coated white to match most ceiling tile colors.
- Includes two (2) Internal Jumper Cables (your choice depending on Radio Options)
- Easy to mount to most recessed ceiling tile environments.
- Meets NEC300-22 paragraph A, B, C & D code for use in the plenum areas.
- Internal Mounting Plate is universal for most radios.
- Cover provides easy visual inspection of interior components LEDs.
- Weighs less than any other recessed ceiling enclosure - 9lbs.
- Enclosures ship with key latch.
- Special Slot for Cisco 1200 (802.11a) antenna.
- Fits standard 2' x 2' and 2' x 4' ceiling tile footprints.
- Aesthetically designed to accommodate a safe and secure office environment.
- Works with most vendors' equipment.
- Includes Mounting Hardware.

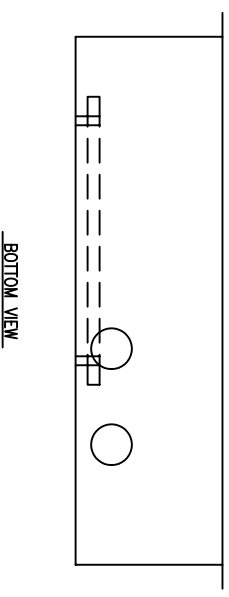
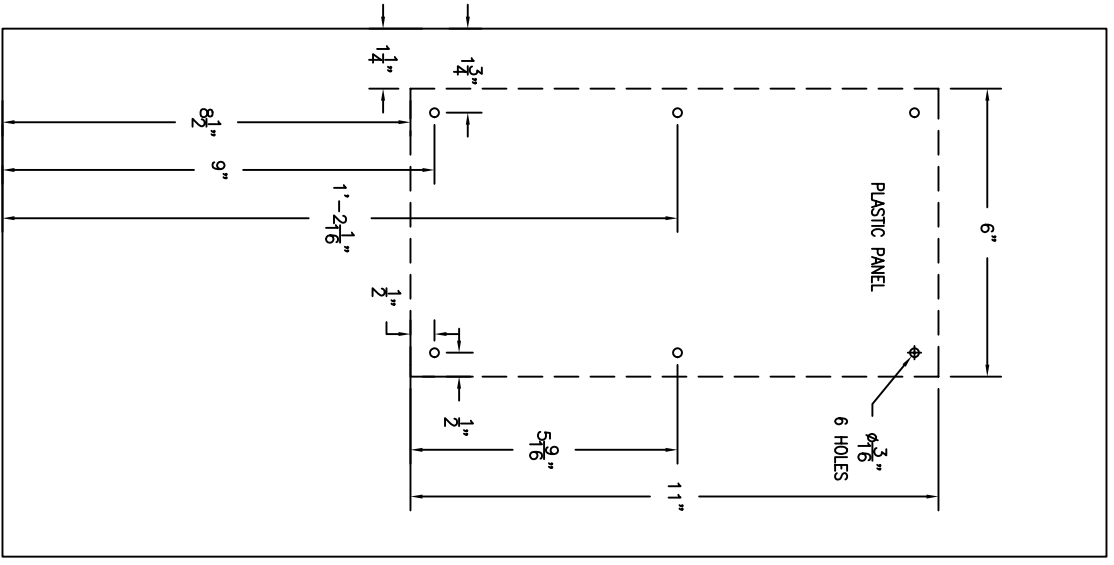
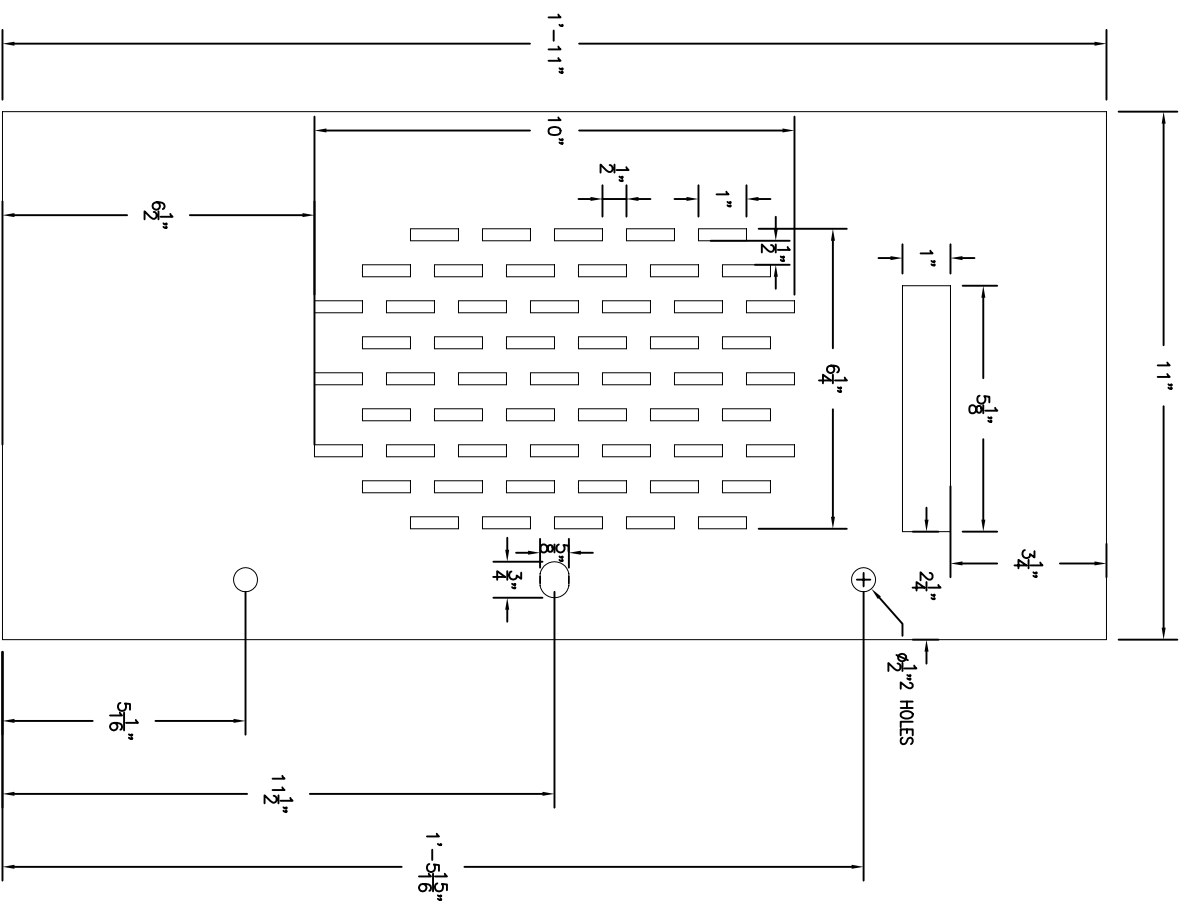
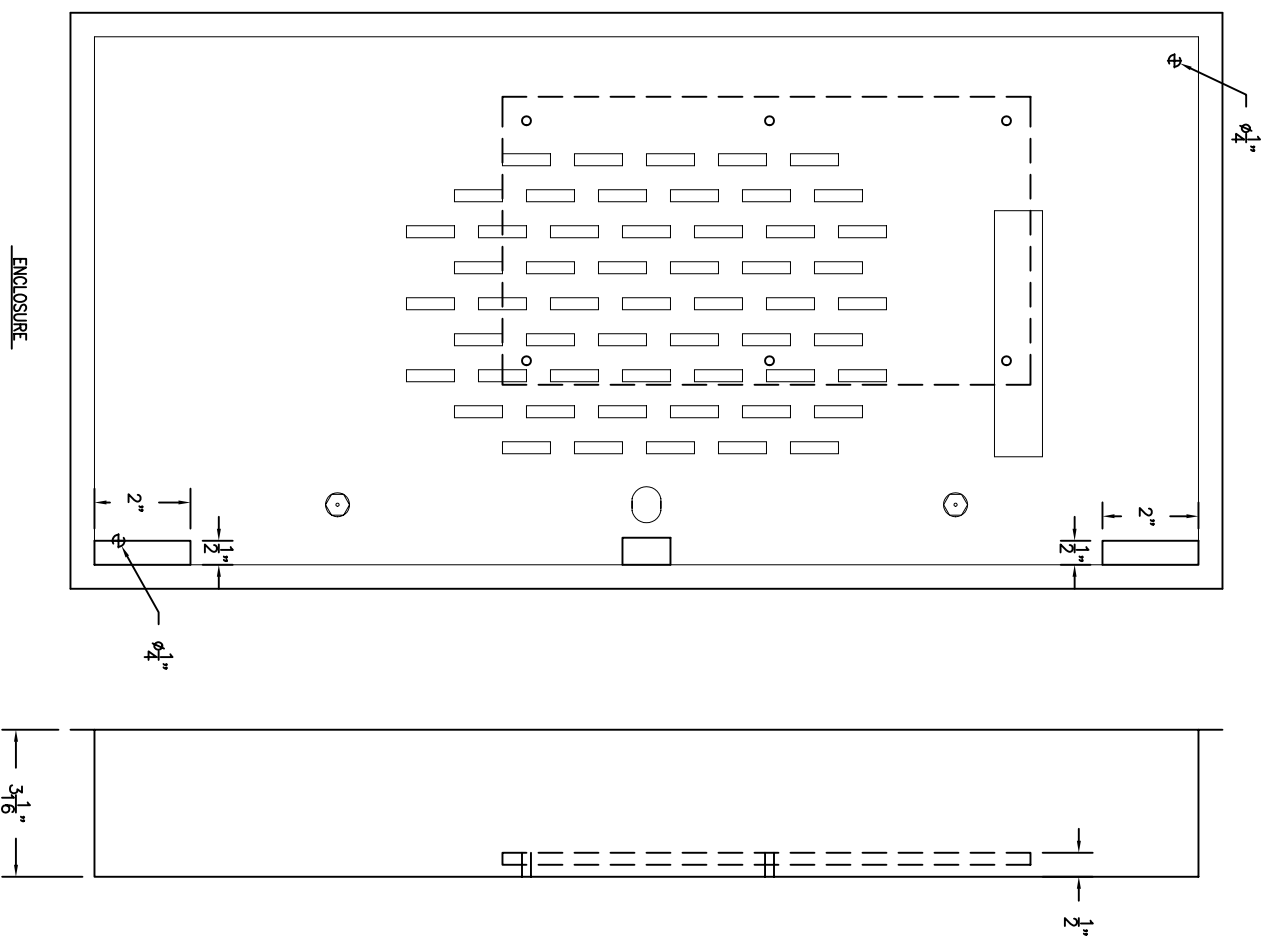
Accessories Available:

- Keyed Locking Mechanism
- Various Bulkhead Connectors
- Custom Internal Mounting Plate

External Dimensions (L x W x D):


- 24" x 12" x 3"
- Weighs less than 10 lbs.





THIS DESIGN DRAWING AND SPECIFICATION IS THE EXCLUSIVE PROPERTY OF SPARCO TECHNOLOGIES. IT IS TO BE USED ONLY FOR THE PROJECT AND NOT BE REPRODUCED OR TRANSMITTED IN ANY FORM OR BY ANY MEANS, ELECTRONIC OR MECHANICAL, INCLUDING PHOTOCOPYING, RECORDING, OR BY ANY INFORMATION STORAGE AND RETRIEVAL SYSTEM, WITHOUT THE WRITTEN PERMISSION OF SPARCO TECHNOLOGIES, INC.

REV.	DATE	BY	DESCRIPTION
0	12/16/04	RC	ISSUE FOR


 13726 LOOKOUT ROAD
 SAN ANTONIO, TEXAS 78233

CEILING ENCLOSURE
 PANEL LAYOUT

DESIGN BY RC	CHECKED BY	APPROVED BY
DATE 12/16/04	SCALE 1/4"=1"	
DWG NO. E04-409	REV. 100	REV. 0